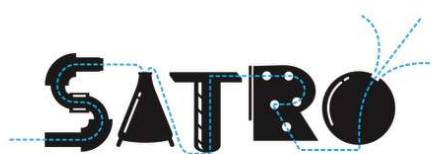




ANNUAL REPORT AND UNAUDITED FINANCIAL STATEMENTS 2024-25



www.SATRO.org.uk
Charity Registration Number 1040572
Company Registration Number 02957349
(England and Wales)

Contents

Welcome	03
Objectives and Activities	05
Our Vision and Strategy	06
Achievements and Performance	08
Primary Programme	08
Secondary Programme	10
Post-16 Programme	13
Structure, Governance and Management	22
Legal and Administrative Information	26
Independent Examiners Report	27
Statement of Financial Activities	28

Welcome

From the Chairman

It gives me great pleasure to introduce the annual report for the 2024-25 academic year.

SATRO continued to thrive and grow through the provision of our ongoing services: Multi-School Events, Vocational Construction, STEM & Employability Workshops, Mentoring and Research Work Placements (RWP) There have been a number of additional events/activities as SATRO continues to change in response to the needs of our Region, these are outlined below.

The Board of Trustees, supported by our CEO and senior management team, has developed our new 3 Year Strategy.

In addition, there have been some changes to the Board and I would like to thank Sarah Flew and Oli Chun, who have retired as trustees for their support for and contribution to the work of SATRO over many years. I am also delighted that we have been joined by three new trustees, Garry Bhela, Russell Bond and Toby Wyithe. They all bring significant professional expertise, as well as a strong commitment to our mission, and the SATRO team is grateful for their advice, guidance and time.

SATRO would not be able to thrive and grow without your support, whether you are funders, volunteers, participating schools or SATRO staff and Trustees, I'd like to thank you all for your vital and continuing support.

Shash Patel
Chair of Trustees



12,210
Students



3,670
Volunteer
Hours



27,933
Student
Interactions

Welcome

From the Chief Executive

This was my first full year as Chief Executive and I want to start by saying a huge thank you to the schools, companies, volunteers and colleagues who have helped to deliver so many inspiring and impactful experiences for the young people we work with.

As you will read in the following pages, 2024/25 was a very busy year, with successful multi-school events including STEMfest, CONSTRUCTIONfest and Girls into STEM. Our annual Problem Solving Challenge continued, now expanded to include a Primary School competition, and we were delighted to support Gulfstream with its first annual corporate challenge.

Our primary STEM workshops remain popular and, as well as being fun and interactive, help to create positive associations with STEM subjects. We were also able to increase the number of home-educated young people who benefited from workshops designed to support their learning.

This year's Research Work Placement Programme was our largest ever, with 92 students working on 25 projects. This popular programme would not be possible without the support and commitment from the companies and research teams who give their time to design and supervise these projects, and we are incredibly grateful to them.

We also launched our new Alumni Network, intended to help those who have been through our programmes make connections and develop networks which will support them into work. A huge than you to L&G for hosting the launch event.

There continued to be strong demand for our Vocational Construction Skills programme, which we were able to deliver in more schools. We were also pleased to see the impact the introduction of AQA Awards alongside the BTEC has had on student achievement, and the positive benefit on future opportunities for those students.

We took the opportunity of our 30th anniversary year to reflect on and refresh our vision and mission and adopt a new three-year strategy. The Trustees are pleased to share with you later in this report our plans for how we intend to fulfil our purpose. All of us at SATRO are excited by the potential of these new plans to create inspiring opportunities for the young people we want to help be better prepared for the world of work.

We were also particularly pleased to be invited to participate in research carried out by Surrey University on behalf of the High Sheriff of Surrey to better understand the reasons why young people become NEET (Not in Education, Employment or Training). We believe that SATRO has an important part to play in creating solutions which help to prevent young people from becoming NEET, and we look forward to continuing to support this work.

Thank you to everyone who has supported SATRO over the past year, we all look forward to continuing to work with you.

Andrew Whitby-Collins
Chief Executive

Objectives and Activities

SATRO is an education and skills charity with a reach across Surrey, Hampshire, Berkshire and South-West London.

We work in all educational settings, partnering with employers to inspire and raise the aspirations of students of all abilities and backgrounds, and give them opportunities to develop the skills and confidence they will need to be ready for the world of work.

STEM, in its broadest sense, is at the heart of what we do. Our partnerships reflect the wide diversity of sectors, and jobs available, and our activities seek to inspire students' ambitions in those industries and, especially at primary school, a love of STEM subjects.

Our activities are centred around two main themes:

Skills, Confidence and Aspiration:

In-school skills workshops, multi-school challenges and events, research projects and mentoring partnerships which challenge perceptions, raise aspirations, increase confidence and prepare students for their next steps in education, training or employment.

Vocational Pathways:

Delivering AQA and BTEC Level 1 construction qualifications, practical construction workshops and SEN independent skills training from school age to young adults.

All areas of our work directly involve employers in the development of real-world experiences and career understanding, including the involvement of staff as volunteers in delivery.

We support students of all abilities and are particularly keen to ensure that young people who lack access to opportunities to be inspired and develop the key skills they will need, and those at risk of becoming NEET (Not in Education, Employment or Training), are able to benefit from our programmes.

Charitable Objectives set out in the Memorandum and Articles:

The advancement of education, principally but not exclusively in the County of Surrey, in particular but not exclusively by educating young people in science, technology and business practice, and associated skills.

Public Benefit

The Trustees have complied with their duty to have due regard to the Charity Commission's guidance on public benefit.

Our Vision and Strategy

We took the opportunity of our 30th anniversary year to look ahead to the future of SATRO and refresh our vision and mission.

Our Vision

That all young people have opportunities to explore their potential and develop skills and confidence to pursue fulfilling careers.

Our Mission

To raise the aspirations of young people for their future, and through engagement with inspirational people from a wide range of businesses, particularly STEM, help them develop the skills and confidence needed to be work ready.

Our Strategy 2025 -28

Key to being able to fulfil our mission are our relationships with schools, volunteers and businesses, without whom we could not improve outcomes for the young people we work with.

A central focus of our efforts over the next few years will be to deepen and strengthen those relationships to improve outcomes and deliver greater impact through our activities. We want to reinforce our place as a trusted partner in raising young people's aspirations, and supporting companies to influence the acquisition and development of key skills which will better prepare their future talent for the world of work.

Future Plans

Our educational and business partnerships are central to the following ways in which we want to see SATRO develop:

SATRO Steps

We will develop our Skills, Confidence and Aspiration offer into a comprehensive programme that progressively develops, from year 7 through to year 11, essential life and employability skills, knowledge and careers awareness.

Participating students will be better able, and feel more confident, to take key decisions about their future, and be on the way to being work ready. Steps will also help schools deliver against the Gatsby benchmarks and meet the requirements of the CEC modern work experience model.

We want to grow that to support more schools and in time extend it to include year 6.

Our own education space

SATRO will set up and operate from a new workshop space in Guildford (in one of the most deprived wards in Surrey as assessed by the Index of Multiple Deprivation). This will enable us to move beyond education settings to work with young people most in need of support.

We will be able to support schools without the numbers to engage us to deliver on site, as well as schools and statutory authorities in need of educational options for, in particular, disengaged students, those with special educational needs, looked after children, those in the youth justice system and others at greater risk of becoming NEET.

Vocational Skills

We will expand our existing construction skills programme into a wider vocational skills programme to include Level 1 vocational stage & screen technical skills and Level 2 construction skills, with the potential for further development if need is identified. As well as helping us to increase the reach of our programmes to support those at risk of becoming NEET, we hope to increase the number of girls on our vocational skills programmes.

Collaborating on efforts to support those at Risk of NEET

We will continue to contribute to the community of practice established in response to the Unseen Surrey report commissioned by the High Sherrif. We will collaborate on the development of programmes targeted at preventing young people becoming NEET, which will build on our expertise in mentoring and utilise our new education space.

Increasing our engagement with girls

We will seek new partners to help us expand our Girls Into STEM event, with aim of holding more across Surrey, and in so doing raise the profile of more businesses by giving them opportunities to engage with and inspire future talent.

We will also introduce a new vocational skills programme which we hope will have greater appeal to girls.

SATRO Alumni Network

We will establish a network for students and businesses with a programme of activities (events, webinars, masterclasses) which help our alumni network continue to develop skills and make connections that will help them enter the workforce. This will be open to all students who have participated in a SATRO programme, including Research Work Placements and Vocational Skills.

We believe that this will also help build and strengthen relationships with corporate partners who we want to help engage with future talent, and who we hope will support by hosting events or webinars.

Increase the number of volunteers

We will grow our network of volunteers to support the growth of our programmes and create more opportunities for young people to be inspired about potential future careers. We will also support businesses to develop their staff, reach out into the community and engage with young people by providing opportunities to share their stories, engage through hands-on workshops, challenges and activities and inspire the future workforce.

Supporting Careers Leads

We will continue to develop our relationships with Careers Leads by establishing a regular forum for feedback and sharing advice. This will help us to better understand how we can develop our programmes to meet their objectives and improve student outcomes.

Achievements and Performance

Skills, Confidence and Aspiration

Primary Programme

We delivered 91 workshops to schools across Surrey and the surrounding counties, including The Science of Health, CSI Goldilocks, Coding, Forces and Magnets, and Electricity. Thanks to some funding from Guildford Poyle Charities we were able to deliver workshops in a number of schools in areas of high need. This has helped us either start or develop positive relationships with those schools and delivery will continue into the 2025-2026 academic year.

Thanks to the support of the Rees Jeffreys Road Fund we were able to develop a new rural roads workshop with a focus on improving road safety and awareness in rural areas as well as sustainability. We delivered this hands-on, interactive workshop in three primary schools, reaching 193 students.

We also continued to deliver bespoke programmes in a number of SEND schools, with a focus on Coding and Animation.

Our Primary Problem Solving Challenge has continued to grow and develop, with 138 students across three heats participating this academic year, along with a final at Guildford College. The students were challenged to create a marble run which lasted as close to 10 seconds as possible. After a hotly fought contest the results were:

- 1st Place- West Ashted Primary
- 2nd Place- Guildford High School Prep
- 3rd Place (Jointly)- The Greville Primary and Merrow Junior



Home Educated Young People

Our events for home educated students continued this year, with 165 students joining us across 3 events at Brooklands Museum.

The students participated in activities ranging from decoding secret messages, creating model molecules and building and coding vehicles. They were also invited to watch demonstrations of chemistry practical work, such as ‘elephant’s toothpaste’.

These events are designed as drop in sessions to introduce home educated students to a variety of science topics, across all areas of science and STEM careers. They are inclusive events, which aim to help and support young people with high levels of anxiety in educational settings.

Feedback from parents on these events has been extremely positive. They have said that there are no other similar events in the local area, and that they “inspired and created opportunities to work together and converse” and “all the activities were very engaging with a wide range, something for everyone”.



Secondary Programme

Employability Workshops

These interactive virtual workshops bring students into contact with volunteers from business to learn about the different roles available, explore with them their career pathways and gain an understanding of the skills and qualifications they need to follow their own routes to work.

They have continued to grow in popularity and will be incorporated into the Steps pilots which will start in 25/26. The workshops were originally developed in partnership with L&G and have proved to be very successful both with students but also within L&G for staff engagement.

After the initial roll-out they have been revised to place more emphasis on skills and now incorporate more time for students to reflect on their own skills. They will now be made available to other companies and to the wider volunteer network which will allow for variety and flexibility for different cohorts of students.



From a teacher after a workshop:

“It was a really enjoyable and interesting morning where students learned about the many different jobs available in this huge company. But crucially, it gave them the opportunity to try their hand at the key skills of researching, communicating and presenting. Well done to all those Year 9 students who took part and impressed our hosts with the focus and effort they brought to this challenge.”

Mentoring

Mentoring improves student confidence and employability skills awareness. Very often improvements in academic performance follow.

Our successful mentoring programmes continued in Broadwater School, Bohunt Farnborough and Cobham Free School, and we started a new programme at Applemore College. We are very grateful for the support we receive from AB CarVal, BMW, HEON and Synamedia who provide mentors and help make this programme possible.

Our mentors provided almost 600 hours of support for the students who were almost all attracting pupil premium and who were felt to be at the risk of disengaging – often because of poor self-confidence or a lack of support from other directions.



One mentor said:

“It's often said that both the mentor and the mentee benefit from the relationship, and this was very much the case in my experience. Working with my student over 2 years gave us the opportunity to build a relationship based on mutual trust, and it was incredibly rewarding to watch them grow, and develop, and build a plan for their future. It can be challenging at times, but those are the times that make the breakthroughs all the more valuable.”

STEMfest

Another successful SATRO STEMfest took place in March, continuing its tradition as a flagship annual showcase of STEM opportunities for young people.

This year's event brought together 21 schools and 252 students, who participated in three dynamic sessions packed with innovative and engaging STEM activities. These sessions were delivered by 20 leading companies, offering students a diverse insight into STEM careers across a wide range of disciplines.

Students experienced a full day of hands-on learning, including:

- Four 15-minute interactive stands
- Two 30-minute workshops
- A one-hour gaming workshop delivered by ACM, introducing the creative process behind game development and the integration of its various elements.

The event concluded with an inspiring keynote from Dr Juliet Jones of NatureMetrics, who shared insights into the cutting-edge work her company undertakes and her own career journey within STEM.

SATRO STEMfest continues to be a fantastic opportunity to collaborate with industry partners and deliver an inspiring, engaging, and fun experience that helps young people envision themselves in a wide range of STEM careers.



Problem Solving Challenge

Our 2025 Problem Solving Challenge was again kindly supported by Air Products. This annual event is designed to equip students with essential future-ready skills through hands-on engineering tasks. It fosters creativity by encouraging students to develop and refine ideas using the engineering cycle, while also building resilience and adaptability under strict time constraints.

This year 582 students from 40 schools competed across five heats to design, make and test a solution to a set problem using only the materials provided. The winning teams from each key stage at each heat progress to the final. Congratulations to this year's winners:

Key Stage 3 – St Bede's School

Key Stage 4 – Claremont Fan Court School

Key Stage 5 – Godalming College

This year, we introduced a new pre-challenge initiative to provide practice problems and additional support from Fluor engineers.

The Challenge wouldn't be possible without the volunteers from STEM industries who play a vital role by supporting students, ensuring compliance with competition rules, and judging the finished products. They consistently report the experience as highly rewarding, offering a unique opportunity to witness creativity under pressure and inspire the next generation of problem-solvers. To all of you we say a huge thank you.



Corporate Challenges

We were delighted to add to our programme of corporate challenges by collaborating with Gulfstream to deliver the inaugural Gulfstream School Innovation Challenge at Gulfstream's Farnborough facility in April 2025.

This innovative event provided 84 students from seven schools with a unique opportunity to engage in a real-world aviation engineering challenge designed by Gulfstream's apprentice team. The day comprised a design consultation and advice phase, followed by construction and testing, culminating in team presentations to a panel of Gulfstream professionals.

Feedback from participants demonstrated significant impact: all students reported that they found the challenge enjoyable, gained a better understanding of Gulfstream and the range of job roles available and had reinforced, or developed a greater interest in pursuing STEM careers. They also felt they had enhanced key employability skills such as teamwork, problem solving, and time management.

This initiative highlights the value of industry-led engagement in inspiring the next generation of engineers and strengthening pathways between education and employment.

Post-16 Programme

Research Work Placements

Our Research Work Placement programme is an opportunity for year 12 students to gain experience of working with a business or academic team on a short research project that is relevant to both the student's studies or future plans and the supervising organisations' objectives.

We are delighted that 2024/25 has been the largest programme so far, with 92 students completing projects chosen from 25 diverse possibilities covering AI, sustainability, methane reduction and marketing as well as physics, chemistry, engineering & many more. We also welcomed four new providers to the programme.

92

Students

17

Companies & Academic
Teams

25

Research Projects

Thanks to the increasing popularity of the programme, due to students' desire to get first hand experience in the world of work, this year we introduced a two fold application process with the students asked to submit a video to support their application. This had the added benefit of helping to better match students to projects.

As well as a wide range of research areas, students benefit from site visits, expert advice and guidance. This year all the students were offered support with workshops on referencing and scientific posters, and many took up the opportunity of virtual practice interviews as well.

Some projects are undertaken individually and some in groups, and results are presented in a variety of ways including films, papers, scientific posters and presentations. The presentations this year were made to industry experts, companies and even a representative from the Department of Energy Security and Net Zero.

Projects qualify for the Crest Gold Award, which furthers students' university applications. The programme culminated in a celebration evening where students showcased their projects, met other participants and networked with representatives from the supporting companies. We are very grateful to British Land and LGC Group for letting us use the fantastic Priestley Building on Surrey Research Park and giving us tours of their new labs.

Feedback from students and providers alike has demonstrated the positive impact:

"David and the team were supportive and approachable throughout, offering clear guidance and feedback that helped me develop my project to a high standard." **ANS Student**

"I really enjoyed working on this project and found the experience to be both engaging and insightful. It has also given me a deeper understanding of how research can be applied in practice." **Thakeham Student**

"The program, gives a great platform to the students. Your organisation's goal and activities are really touching many lives." **KBC Global**

"Our employee's coaching skills really paid off - the change between the first meeting I sat in on and yesterday for both students was simply transformational. Success all round!" **Molecular Medical**

The students were all invited to join our Alumni network.

Alumni Network

We launched our new Alumni Network in June, kindly hosted by L&G in their London office.



The network has been created to help our alumni continue to develop skills and make connections that will help them enter the workforce. It will be open to all students who have participated in a SATRO programme, including Research Work Placements, Problem Solving Challenges and Vocational Skills. We believe that this will also help build and strengthen relationships with corporate partners who we want to help engage with future talent.

The launch event involved a master class for alumni, followed by networking for which we were joined by a number of our corporate partners and RWP providers. As a result of the networking four students attended company insight days during their university break, and another found work during the summer holidays.

As the Network gets up and running, we have been gathering data from alumni to see how we can properly support them as they take their next steps. The interest from our students has been very encouraging and we look forward to growing the Network and reaching more of our students over the next few years. We already have webinars, a LinkedIn group and in person events planned for 2025-26.



Emma, a student at Godalming College and member of the winning Key Stage 5 team in this year's Problem Solving Challenge took up the opportunity to join the Alumni Network from the start. She attended the Alumni Launch and went on to take part in the Research Work Placement programme on a project designed by Future Biogas, which also gave her the opportunity for in person visits to their laboratories.

This gave her the opportunity to attend our annual RWP showcase, present her work and network with other participants and employers. Emma is now a member of our alumni network, joining our LinkedIn group and attending online and in-person events.

"I have really appreciated all the opportunities SATRO have provided me with since I first took part in their Problem Solving Challenge.

"Attending the networking event in London gave me the chance to talk to businesses and other students, building my confidence in a corporate environment - something that you can't learn in the classroom! I was also incredibly grateful to be offered a Research Work Placement with a local company, as this gave me a unique experience to put on my Personal Statement when applying to university, as well as lab-based and communication skills that I can apply to my future career." Emma

Vocational Pathways

Vocational Construction Skills

The SATRO vocational construction skills programme is a weekly 2-hour session in years 10 and 11 (the GCSE years) during which students develop skills in carpentry, plumbing and electrics as well as modules on planning for next steps and being organised. There is also an additional module, minor repairs in the home, which can be added to the course where appropriate.

Participating students work towards either a BTEC Level 1 Award (if only studying for one year) or Certificate (the two-year course) or for some students, particularly those in SEN settings or with low attendance they are able to gain recognition of their achievements with AQA Unit Awards. A SATRO construction tutor goes to the school with all the tools and materials needed for the session and is supported by a school teaching assistant.

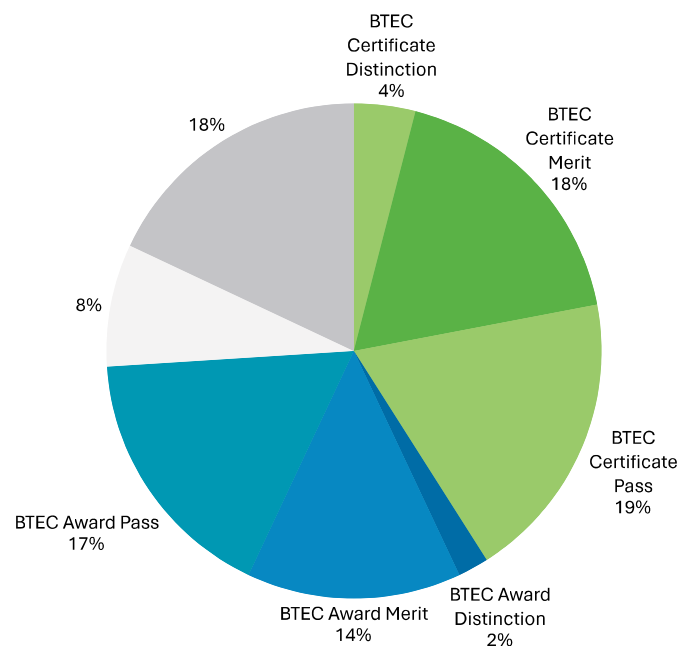
The SATRO Education Lead is responsible for ensuring quality control and that the standard of all assessments is verified. The team is also supported by a programme manager who is responsible for the administration of the programme including tutor support, qualification management and school liaison.

Results

This year we have delivered vocational construction skills to a total of 435 students, of whom 243 completed a qualification, either a BTEC Level 1 Certificate, a BTEC Level 1 Award, or an AQA Unit Award. The rest will continue on to the next year.

The introduction of AQA Unit Awards has continued to be popular and has been incredibly beneficial, especially for SEN students. This year 44 students achieved AQA Unit Awards, ranging from one Award to eight students who got 11 Unit Awards each.

Vocational Construction Results 2025



We have also introduced new certificates of achievement for year 10 students at the end of their first year of the course, which have proved very popular. This is to recognise their achievements and the modules they have completed, as formal recognition of their success from BTEC does not come until the end of the course and we wanted to encourage them at the mid-way point.



School Feedback and Case Studies

We gather feedback from schools and are pleased to share a selection of comments about the benefits and impact of the Vocational Construction Skills programme:

"Students have engaged and interacted well in course. Many have cited it as their favourite part of the school day"

"The impact on the students has always been positive. They have gained an understanding about construction, not just the practical side but the theory that goes with it (costing, safety regulations, how to earn a living). The tutor delivers a great lesson where he helps them to understand the construction industry demonstrating the positive and effective ways of communication"

"Some of the often-disengaged students come and settle in and enjoy the lesson and are happy they achieve something tangible and have great pride when take their work home.

"Of the six students, three plan apprenticeships, two plan to complete college course and one is yet to choose. This shows that for many of the students this has been a direct avenue to their further educational and career progression."

"This course is coursework focussed and has therefore kept our disaffected students engaged and given them an opportunity to achieve. Students take ownership of their work and build on their carpentry skills. They can contribute ideas towards the design of their project, and they can take their work home. This is something that has been highly popular as it encourages them to take pride in their work and have something positive to take home. It has been lovely to see photographs of the students work at their home.

"One student relentlessly contacted local companies, seeking an apprenticeship in electrics. The company were so impressed with his portfolio of work from the construction course that they hired him as soon as he left school after his GCSEs. They usually only take apprenticeships at the age of 18 years"



From an SEN School:

"Most importantly for students at [our school], they will have developed a sense of resilience which supports their self-esteem. Within [school], learners' experiences are structured around success and therefore learners struggle with their resilience once they transition into college. SATRO courses support learners to understand that their work can be taken apart and re-done, in a safe supported environment. This supports them in understanding that they can have faith in their own ability outside of the [school] environment.

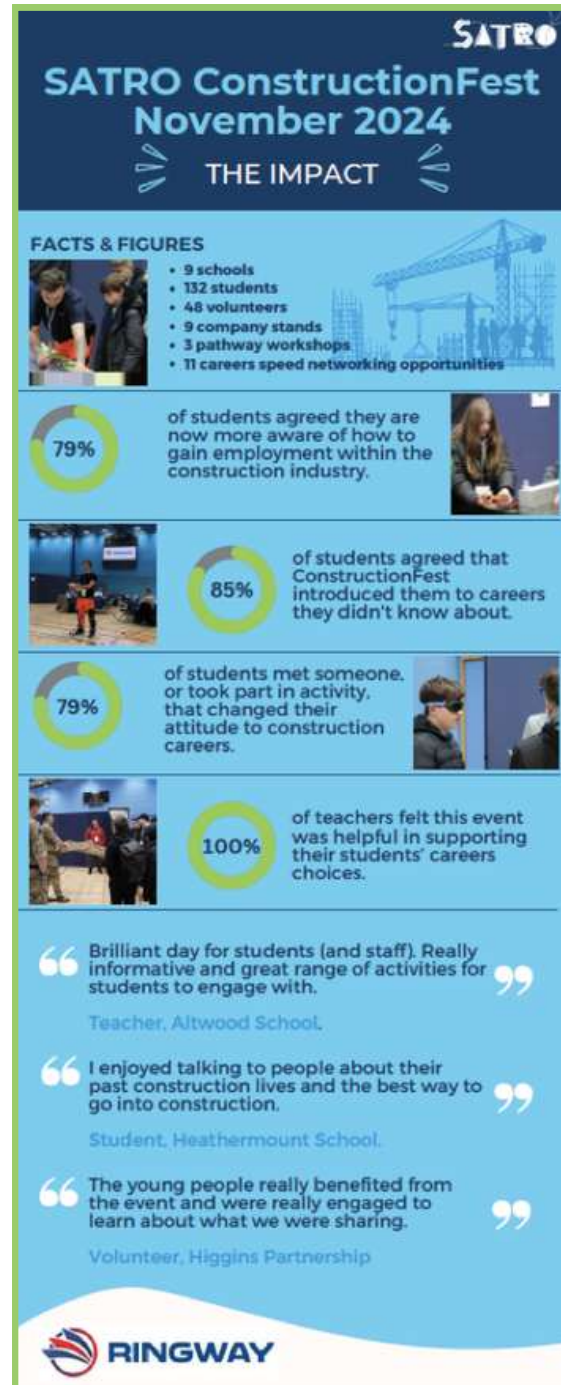
"ConstructionFest has been invaluable to learners in understanding what careers are open to our young people, and the fact that some of the presenters have had difficulties within formal learning as well and yet been successful.

"Finally, Kev, our instructor has had an incredible impact on learners. By giving them the opportunity to be taught by someone external to the school, who understands and supports their needs, helps the learners social skills and being able to trust a wider range of people. SATRO supports some of our learners within their chosen career paths and supports them in moving onto their college course."

CONSTRUCTIONfest

ConstructionFest has become a firmly established part of the academic year. The purpose of the day is to introduce students to a range of companies in the construction sector, take them through the different pathways they could take to get into the construction industry, practice some valuable team-building skills and network with a variety of companies and tradespeople from across the industry.

The day contains pathway workshops, which this year were led by Activate Learning, Ringway and the Army, company stands with a short, hands-on activity, which this year included Balfour Beatty, Bam, Beard, Niblock, Thakeham and Uvex, and careers speed-networking, for which we were joined by AtkinsRealis and Higgins amongst others. The day also helps the schools to meet Gatsby benchmarks, a framework that sets out what careers provision in education should look like, which schools are required to use. In particular the day helps meet benchmark 2: 'Learning from careers and labour market information' and benchmark 5: 'Encounters with employers and employees' and benchmark 7: 'Encounters with further and higher education'.



Level 2 BTEC

We have begun the development of a BTEC Level 2 course thanks the generous support of the Shanly Foundation, enabling our Education Lead and construction tutors to develop the syllabus and work with schools to discuss the feasibility of running the course. Two schools have agreed in principle to pilot the Level 2 course, which, given the lead time needed, will begin in the 26/27 academic year.

Built Environment Festival (BEfest)

Plans for this new festival, targeted at students studying higher level qualifications with a focus on careers in the built environment sector, including surveying, architecture, and environmental mapping have also progressed well. The first festival took place on 9 October 2025.

During the year under review we designed the event, identified suitable companies to participate, and made new contacts where necessary. We also produced explanatory material and signed up companies and schools to take part.

SATRO BEfest

BUILT ENVIRONMENT FESTIVAL
We are delighted to launch a brand new event to engage and excite students about all aspects of the Built Environment, encompassing design, sustainability, construction and the environment. Schools will be invited to bring 12 Year 9/10 students with an interest in science, DT, maths or business to come and find out more about careers in those sectors at this exciting, interactive event.

HOW YOU CAN SUPPORT:

- CONSTRUCTION & ENGINEERING** - Deliver a hands-on, interactive workshop introducing students to some of the many roles directly involved in construction and engineering.
- DESIGN & ENVIRONMENT** - Deliver a hands-on, interactive workshop introducing students to the role showcasing sustainability and design within the construction industry.
- CAREERS SPEED NETWORKING** - Volunteer to take part in timed networking chats with a small group of students. Giving them an insight to your background and career to date, this is an opportunity to chat and inspire students to consider a career in your industry.

WHEN: 9th October 2025
WHERE: Surrey Sports Park, University of Surrey, Richard Meyjes Road, GU2 7AD

HOW TO GET INVOLVED
Sign up to deliver a stand or volunteer to be an interviewee for the careers speed networking. Help us inspire students with an insight into the breadth of different careers within the construction, green skills, transport and utility sectors, so they learn more about what it's like to work in this growing sector and the different apprenticeship and educational pathways to employment.

Booking Form:

FIND OUT MORE:
01483 688 070
jane.sheridan@satro.org.uk

Supported by:
SHANLY FOUNDATION
THAKEHAM

Volunteers

Volunteers are the lifeblood of SATRO and essential to our ability to engage and inspire young people, raise their aspirations and help them develop the skills and confidence they need. We recognise the importance of developing and maintaining our relationships with volunteers and with volunteer coordinators in many of the companies we work with. To that end we have introduced new recruitment and onboarding processes to help us better understand each person's interest in volunteering, what they are hoping to bring to and get out of the experience and where they can make the greatest impact.

We have also improved our resources to help volunteers understand what is expected of them in each of our activities, as well as the regularity of our communications and the sharing of opportunities to get involved. One of our industry volunteers shared his experience:

“SATRO has been instrumental in providing students an insight into the challenges they will face in a working environment and helps in terms of early stage career thinking. From a volunteer perspective, it is satisfying to give something back as students begin to shape the life ahead of them. SATRO really delivers on the day in engaging all, and the challenges are well thought through, and you sense each school appreciates what value SATRO brings and there is a good working relationship.”

Structure, Governance and Management

Surrey SATRO is a charitable company limited by guarantee. The affairs of the charity are regulated by its Memorandum and Articles of Association and governed by the Board of Trustees, who are also the directors for the purposes of company law. The names of all those who were Trustees on the date of this report or who served as a trustee in the reporting period are shown on the legal and administration page.

Trustees are appointed, elected or re-elected for a fixed term, according to the procedures set out in the charity's Memorandum and Articles of Association. New Trustees are recruited by advertisement and/or recommendation by existing Trustees or our network of supporters; the Chairman is tasked with ensuring that we have a diverse set of candidates. They are initially offered the opportunity to observe a Board meeting and are interviewed by the Chairman and CEO. If successful, their appointment is confirmed at a Board meeting. A structured induction programme is agreed and implemented for each new Trustee, covering all aspects of the role and the organisation. They are required to have an enhanced DBS check.

Trustees have a five-point training/awareness plan which has been developed to ensure all Trustees reach a base level of knowledge of SATRO's objectives, governance, and operations. In addition, a "special interests" document is maintained outlining each Trustee's areas of expertise and SATRO's expectations of them.

Trustees participate in SATRO's school activities in a number of ways, including as judges of our popular Problem Solving Challenge, volunteering as advisers and negotiators in our Business & Enterprise Challenge, in our Career Speed Networking, or supporting our Research Work Placement programme.

All Trustees are required to provide information on potential conflicts of interests and related parties. A Code of Conduct is in place to manage any potential conflicts.

The Board ensures that the charity operates in compliance with all relevant UK legislation and regulations. We have initiated an annual governance audit and monitor performance and put in place measures to ensure improvement. The Board's work includes setting SATRO's strategic direction, agreeing the financial plan and monitoring performance against it. Matters reserved for the Board are set out clearly and include the appointment of a CEO who is responsible for the day to day running of the organisation.

The Board has appointed three standing committees of Trustees:

- Finance Committee – reviews financial and operational performance, external audit reports and advises the Board on matters of internal control and financial governance. Chaired by Pete Garrett
- Risk Committee – reviews and updates the risk register and associated policies and procedures and to make recommendations to the Board. Chaired by Shash Patel
- Staffing Committee – reviews staffing policies, staff salaries and HR issues. Chaired by David Leyshon

Risk Management and Mitigation

The charity maintains a register of identified risks which is updated as necessary and reviewed on a six-monthly basis by the Risk Committee, which reports to the Board at each subsequent meeting of the Trustees.

The Trustees consider the main risks to the charity, and the steps taken to mitigate them are:

Risk	Steps Taken to Mitigate
Failure to secure sufficient funding, both to meet core costs and to ensure programme continuity, which is affected by pressure on school budgets that is expected to continue despite the change of government.	Ongoing programme of quality assurance and innovation helps to cement our reputation and maintain strong demand for our services. We have increased resources for fundraising with plans to diversify income streams further to reduce risk.
Impact of the loss or long-term absence of staff, given the small team and staff profile, on programme delivery and charity management.	Improved staff training to enable tutors to cover for each other in the result of absence. Development of succession planning as part of objective and training needs review cycle. Introduction of staff well-being measures.
A failure of financial control which leads to fraud or of unauthorised expenditure and the consequences for financial viability and reputational risk.	Income and expenditure are regularly monitored monthly management accounts and quarterly FinCom meetings. Sign off procedures in place for expenditure and dual authorisation of bank payments required.
A failure of cyber security	Monitored by third party IT contactor, virus software is kept up to date. Multi-Factor Authentication is in place as well as regular training to raise awareness of risk of cyber phishing attacks
A Safeguarding incident which affects the reputation of a key individual or the charity.	Regular safeguarding training for all staff, trustees and volunteers fulfilling certain roles. We follow safeguarding protocols of the schools we work in.
Loss of volunteers and/or inability to recruit sufficient volunteers to replace natural attrition.	Regular communication with volunteers with additional time allocated to engagement, training and recruitment and retention activities.

Employees

SATRO is fortunate to have a dedicated and passionate team of people who are committed to helping the charity achieve its aims and impact the lives of the young people we work with. They regularly go above and beyond and we wish to express our gratitude for their contribution to the outcomes we have been able to achieve over the past year.

SATRO had no employees receiving in excess of £60,000 p.a. in 2024/25. The CEO is not a Trustee and does not have the responsibilities of a statutory director.

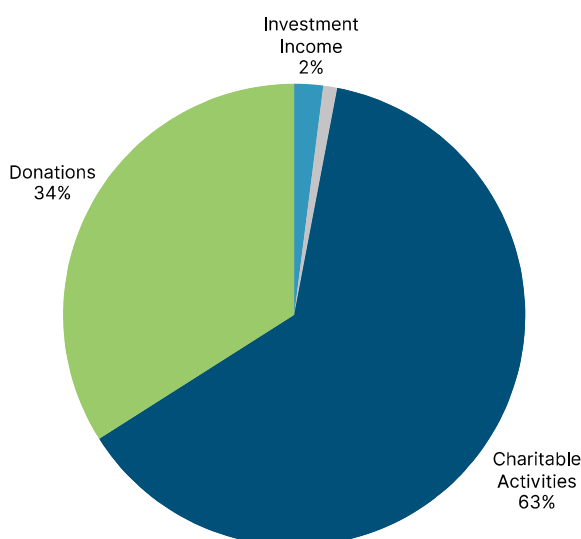
Financial Review

This year saw a £65,001 surplus (2024: £5,924 surplus) with income of £867,452 (2024: £778,032), an increase of 11% and expenditure of £802,451 (2024: £772,108) an increase of 4%. We continue to believe that diversity of income sources is the best way to provide a stable base for the Charity's growth. Our long-term plans anticipate an increase in our operational activity, which will require a commensurate increase in our reserves. As this will need to come from surpluses we will use some of this year's surplus for that purpose and some to fund the planned deficit of expenditure over income in 25/26.

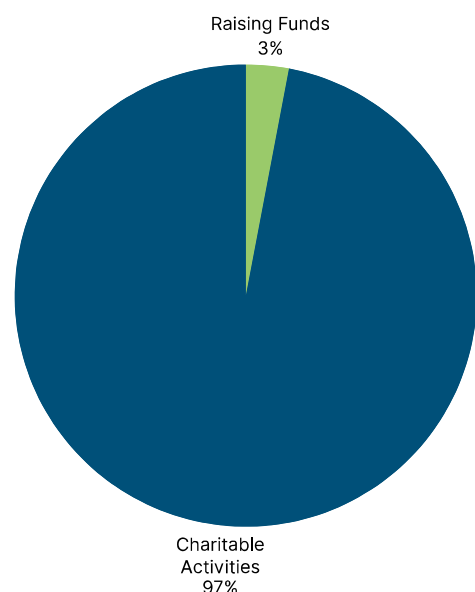
We are mindful of the continued pressures on school budgets and we intend to recruit a new Business Development Manager in the 25/26 year to help realise our strategic ambitions and minimise the cost of our services to schools.

The need for investment in our plans for the future as outlined earlier in this report means that the Trustees anticipate that in 2025/26 there will be a small deficit as it is forecast that expenditure will exceed income.

Where our income came from



How our income was spent



Investment Policy

Surplus funds are invested only in short-term interest-bearing accounts with the charity's principal banker and in short- to medium-term fixed term interest bearing accounts with banks up to the threshold for protection under the Financial Services Compensation Scheme. This policy is considered by the Trustees to be appropriately conservative with little financial risk.

Reserves Policy

The Reserves Policy is based on a detailed assessment of the operations and financial risks of SATRO, including assessment of the reliability of future funding sources, the cost base and any financial commitments. The Trustees take into account the need:

- to ensure continuity in completing educational commitments, including BTEC qualifications, for students, which SATRO would be required to cover in the event of a decline in activity levels and/or funding shortfall.
- to set reserves at a level which allows for sufficient funding to manage the organisation in an orderly manner through any short-to-medium term operating difficulties or to effect an orderly winding up.

Taking those factors into account, as well as rising costs of staffing, materials and overheads including utilities, and based on our financial plan for 2025/26 the Trustees have concluded that the charity needs to maintain free unrestricted reserves (general reserves less funds not readily available for spending e.g. fixed assets) of £386,000. The policy is subject to annual review and effective interim monitoring of the financial situation.

Overall, the free reserves at the year-end were £471,968.

Going Concern

The Trustees recognise that the coming years will be difficult for funding but are reassured by the income from services which continues to be strong due to the need from schools. We continue to place importance on reducing operating costs and diversifying our income to ensure our long-term viability. We aim to maintain our reputation for quality and high impact outcomes of our programme whilst continuing our commitment to innovation and growing and strengthening our relationships. We will continue to invest in the future whilst continuing our tight management of income and costs. The Trustees will continue to regularly review financial forecasts against the budget to ensure that we remain confident of being able to secure adequate funding for SATRO's activities. Consequently, the Trustees consider it entirely appropriate to prepare the accounts on a going concern basis.

The Trustees' report was approved by the Board of Trustees on 28th January 2026.

Mr S N Patel (Chairman)

Trustee

28th January 2026

Legal and Administrative Information

Trustees	Mr S N Patel (Chairman)	
	Mr P Garrett	
	Mr D R Leyshon	
	Ms P P Gough	
	Mr A J Sanderson	
	Ms M E J Shorrocks	(Appointed 18 November 2024)
	Mr T Wyithe	(Appointed 29 January 2025)
	Mr G Bhela	(Appointed 29 January 2025)
	Mr R Bond	(Appointed 16 July 2025)
	Mr O Chun	(Retired 21 October 2024)
Dr S E J Flew	(Retired 29 January 2025)	

Chief Executive Officer Mr A Whitby-Collins

Charity number 1040572

Company number 02957349

Registered office
 Surrey Technology Centre
 40 Occam Road
 Surrey Research Park
 Guildford
 Surrey
 United Kingdom
 GU2 7YG

Independent Examiner
 Debra Saunders FCA
 Azets Audit Services
 Ashcombe Court
 Woolsack Way
 Godalming
 United Kingdom
 GU7 1LQ

Independent Examiners Report

To the Trustees of Surrey SATRO

I report to the trustees on my examination of the financial statements of Surrey SATRO (the charity) for the year ended 31 August 2025.

Responsibilities and basis of report

As the trustees of the charity (and also its directors for the purposes of company law), you are responsible for the preparation of the financial statements in accordance with the requirements of the Companies Act 2006.

Having satisfied myself that the financial statements of the charity are not required to be audited under Part 16 of the Companies Act 2006 and are eligible for independent examination, I report in respect of my examination of the charity's financial statements carried out under section 145 of the Charities Act 2011. In carrying out my examination I have followed the Directions given by the Charity Commission under section 145(5)(b) of the Charities Act 2011.

Independent examiner's statement

Since the charity's gross income exceeded £250,000, the independent examiner must be a member of a body listed in section 145 of the Charities Act 2011. I confirm that I am qualified to undertake the examination because I am a member of ICAEW, which is one of the listed bodies. I have completed my examination. I confirm that no matters have come to my attention in connection with the examination giving me cause to believe that in any material respect:

1. accounting records were not kept in respect of the charity as required by section 386 of the Companies Act 2006.
2. the financial statements do not accord with those records; or
3. the financial statements do not comply with the accounting requirements of section 396 of the Companies Act 2006 other than any requirement that the financial statements give a true and fair view, which is not a matter considered as part of an independent examination; or
4. the financial statements have not been prepared in accordance with the methods and principles of the

Statement of Recommended Practice for accounting and reporting by charities applicable to charities preparing their financial statements in accordance with the Financial Reporting Standard applicable in the UK and Republic of Ireland (FRS 102).

I have no concerns and have come across no other matters in connection with the examination to which attention should be drawn in this report in order to enable a proper understanding of the financial statements to be reached.

Debra Saunders FCA

Azets Audit Services
Ashcombe Court, Woolsack Way
Godalming, Surrey
GU7 1LQ

3rd February 2026

Statement of Financial Activities

Including Income and Expenditure Account

For the Year Ended August 31st 2025

Current financial year

	Notes	Unrestricted funds 2025 £	Restricted funds 2025 £	Total 2025 £	Total 2024 £
<u>Income and endowments from:</u>					
Donations and legacies	2	93,171	201,303	294,474	277,606
Charitable activities	3	543,819	-	543,819	493,592
Investments	4	16,200	-	16,200	6,834
Other income	5	12,959	-	12,959	-
Total income		<u>666,149</u>	<u>201,303</u>	<u>867,452</u>	<u>778,032</u>
<u>Expenditure on:</u>					
Raising funds	6	24,835	-	24,835	36,670
Charitable activities	7	566,399	211,217	777,616	735,438
Total expenditure		<u>591,234</u>	<u>211,217</u>	<u>802,451</u>	<u>772,108</u>
Net incoming/(outgoing) resources before transfers		74,915	(9,914)	65,001	5,924
Gross transfers between funds		(9,914)	9,914	-	-
Net income for the year/ Net movement in funds		65,001	-	65,001	5,924
Fund balances at 1 September 2024		406,967	-	406,967	401,043
Fund balances at 31 August 2025		<u>471,968</u>	<u>-</u>	<u>471,968</u>	<u>406,967</u>

The statement of financial activities includes all gains and losses recognised in the year. All income and expenditure derive from continuing activities.

The statement of financial activities also complies with the requirements for an income and expenditure account under the Companies Act 2006

Statement of Financial Activities

Including Income and Expenditure Account

For The Year Ended August 31st 2025

Prior financial year

	Notes	Unrestricted funds 2024 £	Restricted funds 2024 £	Total 2024 £
Income and endowments from:				
Donations and legacies	2	593	277,013	277,606
Charitable activities	3	493,592	-	493,592
Investments	4	6,834	-	6,834
Total income		501,019	277,013	778,032
Expenditure on:				
Raising funds	6	36,670	-	36,670
Charitable activities	7	436,675	298,763	735,438
Total expenditure		473,345	298,763	772,108
Net incoming/(outgoing) resources before transfers		27,674	(21,750)	5,924
Net income for the year/ Net movement in funds		27,674	(21,750)	5,924
Fund balances at 1 September 2023		379,293	21,750	401,043
Fund balances at 31 August 2024		406,967	-	406,967

Balance Sheet

As At August 31st 2025

	Notes	2025		2024	
		£	£	£	£
Fixed assets					
Tangible assets	14		31,374		45,304
Current assets					
Debtors	15	21,915		16,156	
Cash at bank and in hand		540,942		483,500	
		<u>562,857</u>		<u>499,656</u>	
Creditors: amounts falling due within one year	16	<u>(122,263)</u>		<u>(137,993)</u>	
Net current assets			<u>440,594</u>		<u>361,663</u>
Total assets less current liabilities			<u>471,968</u>		<u>406,967</u>
The funds of the charity					
Unrestricted funds	20		<u>471,968</u>		<u>406,967</u>
			<u>471,968</u>		<u>406,967</u>

The company is entitled to the exemption from the audit requirement contained in section 477 of the Companies Act 2006, for the year ended 31 August 2025.

The directors acknowledge their responsibilities for complying with the requirements of the Companies Act 2006

with respect to accounting records and the preparation of financial statements.

The members have not required the company to obtain an audit of its financial statements for the year in question in accordance with section 476.

These financial statements have been prepared in accordance with the provisions applicable to companies subject to the small companies regime.

The financial statements were approved by the trustees on 28 January 2026.

Mr S N Patel (Chairman)

Trustee

Company registration number 02957349 (England and Wales)

Cash Flow

For The Year Ended August 31st 2025

	Notes	2025		2024	
		£	£	£	£
Cash flows from operating activities					
Cash generated from operations	25		41,242		81,716
Investing activities					
Investment income received		16,200		6,834	
Net cash generated from investing activities					
			16,200		6,834
Net cash generated from financing activities					
			-		-
Net increase in cash and cash equivalents					
			57,442		88,550
Cash and cash equivalents at beginning of year					
			483,500		394,950
Cash and cash equivalents at end of year					
			540,942		483,500

Notes to the Financial Statements

For The Year Ended August 31st 2025

1 Accounting policies

Charity information

Surrey SATRO is a private company limited by guarantee incorporated in England and Wales. The registered office is Surrey Technology Centre, 40 Occam Road, Surrey Research Park, Guildford, Surrey, GU2 7YG, United Kingdom.

1.1 Accounting convention

The financial statements have been prepared in accordance with the charity's Articles of Association, the Companies Act 2006, FRS 102 "The Financial Reporting Standard applicable in the UK and Republic of Ireland" ("FRS 102") and the Charities SORP "Accounting and Reporting by Charities: Statement of Recommended Practice applicable to charities preparing their accounts in accordance with the Financial Reporting Standard applicable in the UK and Republic of Ireland (FRS 102)" (effective 1 January 2019). The charity is a Public Benefit Entity as defined by FRS 102. The financial statements are prepared in sterling, which is the functional currency of the charity. Monetary amounts in these financial statements are rounded to the nearest £. The financial statements have been prepared under the historical cost convention. The principal accounting policies adopted are set out below.

1.2 Going concern

At the time of approving the financial statements, the trustees have a reasonable expectation that the charity has adequate resources to continue in operational existence for the foreseeable future. Thus the trustees continue to adopt the going concern basis of accounting in preparing the financial statements.

1.3 Charitable funds

Unrestricted funds are available for use at the discretion of the trustees in furtherance of their charitable objectives. Restricted funds are subject to specific conditions by donors or grantors as to how they may be used. The purposes and uses of the restricted funds are set out in the notes to the financial statements.

1.4 Income

Income is recognised when the charity is legally entitled to it after any performance conditions have been met, the amounts can be measured reliably, and it is probable that income will be received. Cash donations are recognised on receipt. Other donations are recognised once the charity has been notified of the donation, unless performance conditions require deferral of the amount. Income tax recoverable in relation to donations received under Gift Aid or deeds of covenant is recognised at the time of the donation.

Legacies are recognised on receipt or otherwise if the charity has been notified of an impending distribution, the amount is known, and receipt is expected. If the amount is not known, the legacy is treated as a contingent asset.

Notes to the Financial Statements (continued)

For The Year Ended August 31st 2025

1.5 Expenditure

All expenditure is recognised once there is a legal or constructive obligation to that expenditure, the outflow of funds is probable, and the amount can be measured reliably. All costs are allocated to the applicable expenditure heading to aggregate similar costs to that category. All costs are allocated between the expenditure categories in the Statement of Financial Activities on a basis designed to reflect the use of the resource. Costs relating to a particular activity are allocated directly; others are apportioned on an appropriate basis which reflects the use of the resources. Where costs cannot be directly attributed to particular activity, for example, support and governance costs, these have been allocated on a 67% : 33% split between Construction and STEM & Employability within charitable activities. The charity has reviewed their activities and, based on the use of resources, has ascertained that this allocation between Construction and STEM & Employability is an accurate reflection of the charity's affairs.

1.6 Tangible fixed assets

Tangible fixed assets are initially measured at cost and subsequently measured at cost or valuation, net of depreciation and any impairment losses.

Depreciation is recognised so as to write off the cost or valuation of assets less their residual values over their useful lives on the following bases:

- Fixtures and fittings 25% reducing balance
- Motor vehicles 25% reducing balance

The gain or loss arising on the disposal of an asset is determined as the difference between the sale proceeds and the carrying value of the asset, and is recognised in the statement of financial activities.

Capitalisation policy

Fixed assets purchased above the limit of £2,000 are capitalised.

1.7 Impairment of fixed assets

At each reporting end date, the charity reviews the carrying amounts of its tangible assets to determine whether there is any indication that those assets have suffered an impairment loss. If any such indication exists, the recoverable amount of the asset is estimated in order to determine the extent of the impairment loss (if any).

1.8 Cash and cash equivalents

Cash and cash equivalents include cash in hand, deposits held at call with banks, other short-term liquid investments with original maturities of three months or less, and bank overdrafts. Bank overdrafts are shown within borrowings in current liabilities.

Notes to the Financial Statements (continued)

For The Year Ended August 31st 2025

1.9 Financial instruments

The charity has elected to apply the provisions of Section 11 'Basic Financial Instruments' and Section 12 'Other Financial Instruments Issues' of FRS 102 to all of its financial instruments. Financial instruments are recognised in the charity's balance sheet when the charity becomes party to the contractual provisions of the instrument.

Financial assets and liabilities are offset, with the net amounts presented in the financial statements, when there is a legally enforceable right to set off the recognised amounts and there is an intention to settle on a net basis or to realise the asset and settle the liability simultaneously.

Basic financial assets

Basic financial assets, which include debtors and cash and bank balances, are initially measured at transaction price including transaction costs and are subsequently carried at amortised cost using the effective interest method unless the arrangement constitutes a financing transaction, where the transaction is measured at the present value of the future receipts discounted at a market rate of interest. Financial assets classified as receivable within one year are not amortised.

Basic financial liabilities

Basic financial liabilities, including creditors and bank loans are initially recognised at transaction price unless the arrangement constitutes a financing transaction, where the debt instrument is measured at the present value of the future payments discounted at a market rate of interest. Financial liabilities classified as payable within one year are not amortised.

Debt instruments are subsequently carried at amortised cost, using the effective interest rate method. Trade creditors are obligations to pay for goods or services that have been acquired in the ordinary course of operations from suppliers. Amounts payable are classified as current liabilities if payment is due within one year or less. If not, they are presented as non-current liabilities. Trade creditors are recognised initially at transaction price and subsequently measured at amortised cost using the effective interest method.

Derecognition of financial liabilities

Financial liabilities are derecognised when the charity's contractual obligations expire or are discharged or cancelled.

1.10 Employee benefits

The cost of any unused holiday entitlement is recognised in the period in which the employee's services are received. Termination benefits are recognised immediately as an expense when the charity is demonstrably committed to terminate the employment of an employee or to provide termination benefits.

1.11 Retirement benefits

Payments to defined contribution retirement benefit schemes are charged as an expense as they fall due.

Notes to the Financial Statements (continued)

For The Year Ended August 31st 2025

2 Income from donations and legacies

	Unrestricted funds 2025 £	Restricted funds 2025 £	Total 2025 £	Unrestricted funds 2024 £	Restricted funds 2024 £	Total 2024 £
Donations and gifts	93,171	201,303	294,474	593	277,013	277,606

3 Income from charitable activities

	Unrestricted funds 2025 £	Unrestricted funds 2024 £
Income from schools and colleges	528,036	474,306
Sales of services by beneficiaries	15,783	19,286
	<u>543,819</u>	<u>493,592</u>

4 Income from investments

	Unrestricted funds 2025 £	Unrestricted funds 2024 £
Interest receivable	16,200	6,834

5 Other income

	Unrestricted funds 2025 £	Unrestricted funds 2024 £
Insurance income	12,959	-

6 Raising funds

	Unrestricted funds 2025 £	Unrestricted funds 2024 £
<u>Fundraising and publicity</u>		
Staff costs	22,751	36,454
Support costs	2,084	216
	<u>24,835</u>	<u>36,670</u>

Notes to the Financial Statements (continued)

For The Year Ended August 31st 2025

7 Charitable activities

	STEM & Employability 2025 £	Construction 2025 £	Total 2025 £	Total 2024 £
Staff costs	159,543	341,959	501,502	434,720
Depreciation and impairment	-	13,929	13,929	20,295
Associates	426	-	426	1,316
Motor and travel	2,943	43,238	46,181	49,463
Materials and tools	8,086	23,928	32,014	37,393
Office costs	25,686	24,269	49,955	22,539
Other	12,131	23,220	35,351	33,046
	<u>208,815</u>	<u>470,543</u>	<u>679,358</u>	<u>598,772</u>
Share of support costs (see note 9)	27,786	56,414	84,200	131,753
Share of governance costs (see note 9)	4,639	9,419	14,058	4,913
	<u>241,240</u>	<u>536,376</u>	<u>777,616</u>	<u>735,438</u>
Analysis by fund				
Unrestricted funds	30,023	536,376	566,399	436,675
Restricted funds	211,217	-	211,217	298,763
	<u>241,240</u>	<u>536,376</u>	<u>777,616</u>	<u>735,438</u>

8 Description of charitable activities

STEM and Employability- Programmes of activities, challenges, and events in Science, Technology, Engineering and Maths (STEM) related activities. This also includes careers events, mentoring, business and skills learning.

Construction - The delivery of training via a fleet of mobile classrooms in Construction and Building Services skills.

Notes to the Financial Statements (continued)

For The Year Ended August 31st 2025

9 Support costs

	Support costs	Governance costs	2025	Support costs	Governance costs	2024
	£	£	£	£	£	£
Staff costs	52,370	3,678	56,048	63,905	-	63,905
Motor and travel	78	-	78	23	-	23
Office costs	25,462	-	25,462	59,810	-	59,810
Other	8,374	4,140	12,514	8,231	77	8,308
Accountancy fees	-	6,240	6,240	-	4,836	4,836
	<u>86,284</u>	<u>14,058</u>	<u>100,342</u>	<u>131,969</u>	<u>4,913</u>	<u>136,882</u>
Analysed between						
Fundraising	2,084	-	2,084	216	-	216
Charitable activities	84,200	14,058	98,258	131,753	4,913	136,666
	<u>86,284</u>	<u>14,058</u>	<u>100,342</u>	<u>131,969</u>	<u>4,913</u>	<u>136,882</u>

Governance costs includes independent examination fees of £2,350 (2024: £2,250).

10 Net movement in funds

	2025	2024
	£	£
Net movement in funds is stated after charging/(crediting)		
Depreciation of owned tangible fixed assets	13,929	19,090
Loss on disposal of tangible fixed assets	-	1,205
	<u>13,929</u>	<u>20,295</u>

11 Trustees

None of the trustees (or any persons connected with them) received any remuneration, benefits or expenses from the charity during the year (2024: nil).

12 Employees

The average monthly number of employees during the year was:

	2025	2024
	Number	Number
Administration	1	1
Activity support	7	6
Tutors	12	12
	<u>20</u>	<u>19</u>
Total	<u>20</u>	<u>19</u>

Notes to the Financial Statements (continued)

For The Year Ended August 31st 2025

12 Employees

(Continued)

Employment costs	2025 £	2024 £
Wages and salaries	530,773	490,088
Social security costs	38,408	33,907
Other pension costs	11,120	11,084
	<u>580,301</u>	<u>535,079</u>

There were no employees whose annual remuneration was more than £60,000 (2024: none).

The full time equivalent number of employees for the year was 15 (2024: 14)

13 Taxation

The charity is exempt from tax on income and gains falling within section 505 of the Taxes Act 1988 or section 252 of the Taxation of Chargeable Gains Act 1992 to the extent that these are applied to its charitable objects.

14 Tangible fixed assets

	Fixtures and fittings £	Motor vehicles £	Total £
Cost			
At 1 September 2024	2,106	158,742	160,848
Disposals	(2,106)	-	(2,106)
	<u>-</u>	<u>158,742</u>	<u>158,742</u>
At 31 August 2025	-	158,742	158,742
Depreciation and impairment			
At 1 September 2024	2,106	113,439	115,545
Depreciation charged in the year	-	13,929	13,929
Eliminated in respect of disposals	(2,106)	-	(2,106)
	<u>-</u>	<u>127,368</u>	<u>127,368</u>
At 31 August 2025	-	127,368	127,368
Carrying amount			
At 31 August 2025	<u>-</u>	<u>31,374</u>	<u>31,374</u>
At 31 August 2024	<u>-</u>	<u>45,304</u>	<u>45,304</u>

Notes to the Financial Statements (continued)

For The Year Ended August 31st 2025

15 Debtors

	2025	2024
	£	£
Amounts falling due within one year:		
Trade debtors	6,133	2,664
Prepayments and accrued income	15,782	13,492
	<u>21,915</u>	<u>16,156</u>

16 Creditors: amounts falling due within one year

	Notes	2025	2024
		£	£
Other taxation and social security		11,068	8,892
Deferred income	17	95,014	116,738
Trade creditors		7,131	7,053
Other creditors		1,712	510
Accruals		7,338	4,800
		<u>122,263</u>	<u>137,993</u>

17 Deferred income

	2025	2024
	£	£
Other deferred income	95,014	116,738
	<u>95,014</u>	<u>116,738</u>

At the balance sheet date the charity was holding funds received in advance for workshops and events to be held in the future.

	2025	2024
	£	£
Deferred income is included within:		
Current liabilities	95,014	116,738
	<u>95,014</u>	<u>116,738</u>
Movements in the year:		
Deferred income at 1 September 2024	116,738	79,719
Released from previous periods	-	(79,719)
Resources deferred in the year	(21,724)	116,738
	<u>95,014</u>	<u>116,738</u>
Deferred income at 31 August 2025	<u>95,014</u>	<u>116,738</u>

Notes to the Financial Statements (continued)

For The Year Ended August 31st 2025

18 Retirement benefit schemes

	2025	2024
	£	£
Defined contribution schemes		
Charge to profit or loss in respect of defined contribution schemes	11,120	11,084
	<u>11,120</u>	<u>11,084</u>

The charity operates a defined contribution pension scheme for all qualifying employees. The assets of the scheme are held separately from those of the charity in an independently administered fund.

19 Restricted funds

The income funds of the charity include restricted funds comprising the following unexpended balances of donations and grants held on trust for specific purposes:

	At 1 September 2024	Incoming resources	Resources expended	Transfers	At 31 August 2025
	£	£	£	£	£
STEM/Employability Programme Fund	-	201,303	(211,217)	9,914	-
	<u>-</u>	<u>201,303</u>	<u>(211,217)</u>	<u>9,914</u>	<u>-</u>
Previous year:					
	At 1 September 2023	Incoming resources	Resources expended	Transfers	At 31 August 2024
	£	£	£	£	£
STEM/Employability Programme Fund	14,750	125,787	(140,537)	-	-
Mobile Classroom Fund	7,000	151,226	(158,226)	-	-
	<u>21,750</u>	<u>277,013</u>	<u>(298,763)</u>	<u>-</u>	<u>-</u>

The STEM & Employability Fund is made available to help promote and deliver a variety of STEM and Employability skills activities with schools, and supports our mentoring programme with students aged 14-16 who are not reaching their full potential at school, providing regular one-to-one coaching sessions from trained volunteers.

The Construction Mobile Classroom Fund is to support the delivery of training to schools and youth groups in Construction and Building Services through the Mobile Classrooms programme.

The transfer from the unrestricted fund is intended to cover the deficit on the restricted fund.

Notes to the Financial Statements (continued)

For The Year Ended August 31st 2025

20 Unrestricted funds

	At 1 September 2024 £	Incoming resources £	Resources expended £	Transfers £	At 31 August 2025 £
Designated Fund - Manley Estate Donation	26,763	-	-	-	26,763
Designated Fund - Construction tool	-	-	-	2,400	2,400
Designated Fund - STEM tools	-	-	-	4,998	4,998
General funds	380,204	666,149	(591,234)	(17,312)	437,807
	<u>406,967</u>	<u>666,149</u>	<u>(591,234)</u>	<u>(9,914)</u>	<u>471,968</u>
Previous year:	At 1 September 2023 £	Incoming resources £	Resources expended £	Transfers £	At 31 August 2024 £
Transfer to designated funds	-	-	-	26,763	26,763
General funds	379,293	501,019	(473,345)	(26,763)	380,204
	<u>379,293</u>	<u>501,019</u>	<u>(473,345)</u>	<u>-</u>	<u>406,967</u>

In the prior year, there was a transfer of a legacy to the designated fund to promote and expand the reach of our STEM & Employability programmes.

The designated fund transfers relating to construction tool replacement contingency fund of £2,400 and the STEM tools replacement contingency of £4,998 are amounts set aside for the replacement of tools in the case of theft.

There is a transfer of £9,914 from the unrestricted fund to the restricted fund to cover the deficit on the restricted fund at the year end.

21 Analysis of net assets between funds

	Unrestricted funds 2025 £
At 31 August 2025:	
Tangible assets	31,374
Current assets/(liabilities)	440,594
	<u>471,968</u>

Notes to the Financial Statements (continued)

For The Year Ended August 31st 2025

21 Analysis of net assets between funds

(Continued)

	Unrestricted funds 2024 £
At 31 August 2024:	
Tangible assets	45,304
Current assets/(liabilities)	361,663
	<u>406,967</u>

22 Operating lease commitments

Lessee

At the reporting end date the charity had outstanding commitments for future minimum lease payments under non-cancellable operating leases, which fall due as follows:

	2025 £	2024 £
Within one year	14,599	13,594
Between two and five years	15,425	20,957
	<u>30,024</u>	<u>34,551</u>

23 Related party transactions

There were no disclosable related party transactions during the year (2024 - none).

24 Company limited by guarantee

Surrey SATRO is a company limited by guarantee and accordingly does not have any share capital. Each director has pledged to contribute £1 in the case the charitable company becomes insolvent.

Notes to the Financial Statements (continued)

For The Year Ended August 31st 2025

25 Cash generated from operations	2025 £	2024 £
Surplus for the year	65,001	5,924
Adjustments for:		
Investment income recognised in statement of financial activities	(16,200)	(6,834)
Depreciation and impairment of tangible fixed assets	13,929	20,295
Movements in working capital:		
(Increase)/decrease in debtors	(5,758)	27,197
Increase/(decrease) in creditors	5,994	(1,885)
(Decrease)/increase in deferred income	(21,724)	37,019
Cash generated from operations	<u>41,242</u>	<u>81,716</u>

26 Analysis of changes in net funds

The charity had no material debt during the year.